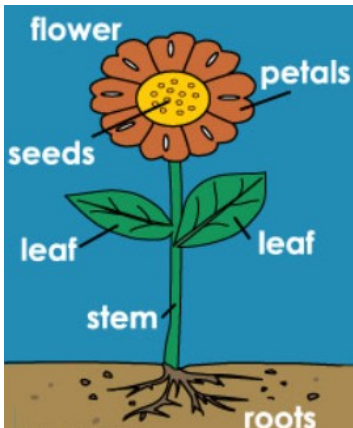


# Plants

## Environment

### Prior Knowledge

Previously, we have learnt about plants and described how seeds and bulbs grow into mature plants. We found out and described how plants need water, light and a suitable temperature to grow and stay healthy. We have also learnt that living things can be grouped in a variety of ways. Explored and used classification keys to help group, identify and name a variety of living things in their local and wider environment.



### My Component Knowledge:

Lesson 1: I can set up an enquiry to test our theories on what plants need to grow and thrive.

Lesson 2: I can identify and describe the function of parts of flowering plants.

Lesson 3: I can explain and illustrate the life cycle of a plant

Lesson 4: I can set up an experiment to investigate how water is transported through a plant.

Lesson 5: I can explain how water is transported through plants

Lesson 6: I can recall prior knowledge.

### My Composite Knowledge:

To identify what plants need to grow and thrive and know the different parts of a plant and their function. To know how water is transported through plants.

### My Powerful Knowledge:

To know the function of each part of a plant and explain how a plant makes food and transports water. To explain germination and how being colour helps in pollination.

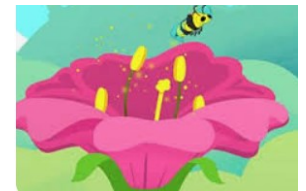


### Key Vocabulary

**Tier 1:** Seeds, stems, roots, soil. Leaves and grow.

**Tier 2:** Producer, seedlings and moisture

**Tier 3:** Pollinator, photosynthesis and germinate



How is water transported through plants?

What is germination?

What are the parts of a flower and their function?

